

how to fit and care for your **Velux roller blind**

IN ORDER TO KEEP YOUR BLIND SAFE IN TRANSIT, THE BRACKETS ARE PACKED SEPARATELY AND ENCLOSED AT ONE END OF THE BOX. PLEASE CHECK THOROUGHLY BEFORE DISCARDING ANY PACKAGING.

aftercare

To ensure your Roller blind stays looking its best for many years to come, follow the straightforward operating and cleaning instructions below:

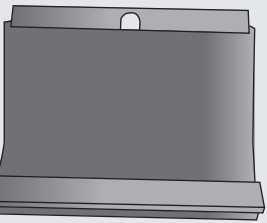
Operating Instructions

- Use the tab to raise and lower the blind to your desired height

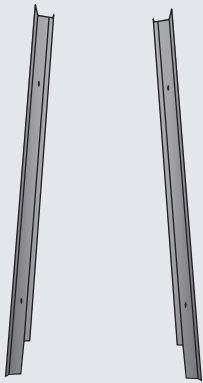
Cleaning

- Simply dust down as required with a dry or damp cloth

1 Blind cassette: 1



2 Side channels: 2

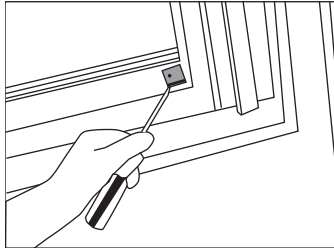


3 Wood Screws: 4



Velux

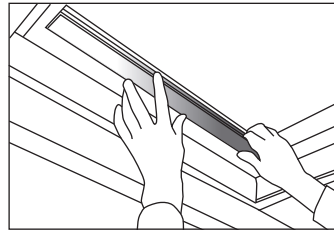
Remove the two grey tabs (when present) from each side of the window frame using a flat blade screw driver. Be careful not to damage the wood on the edge of the frame.



step one

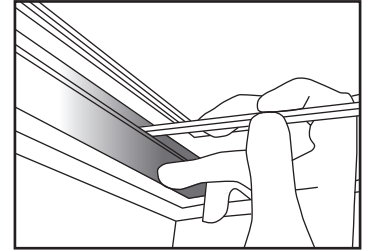
Position the side channels inside the recess so they are flush with the front edge inside of the frame.

Ensure that the cut outs are at the top and be aware that there is a left hand and right hand channel.



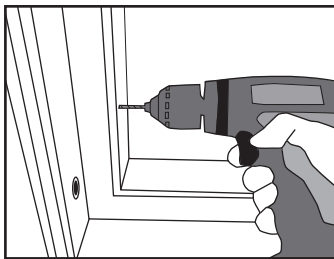
step two

Mark the position of the fixing holes through the two slots in each side channel.



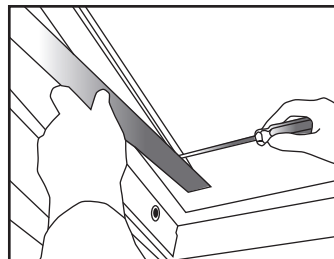
step three

Remove the side channels and drill a small pilot hole (2mm) for the fixing screws.



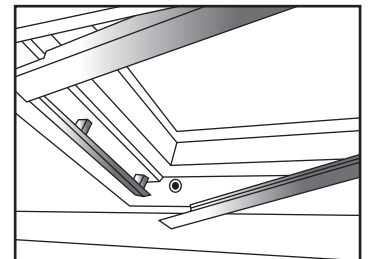
step four

Position a fixing screw through the bottom slot in each side channel and lightly tighten.



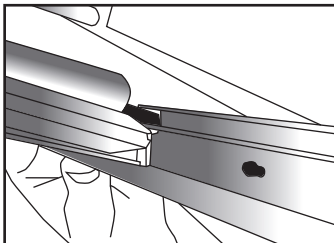
step five

Once both channels are lightly tightened, carefully tilt them forward enough to allow the assembled roller cassette to be positioned.



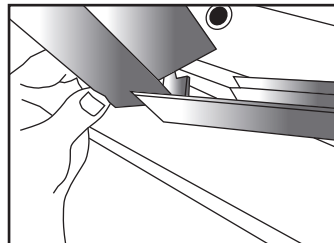
step six

Position the cassette so that the protruding black lugs locate into the narrow track on each side channel.



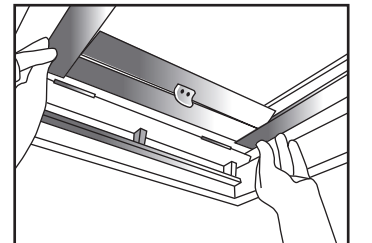
step seven

At the same time, ensure that the brackets are engaged into the cut out at the top of each side channel.



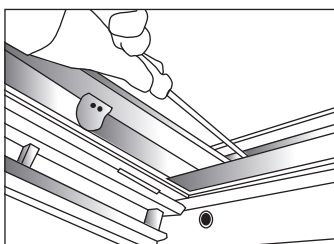
step eight

Push the assembled cassette and the side channels forward so they are flush with the front inside edge of the frame.



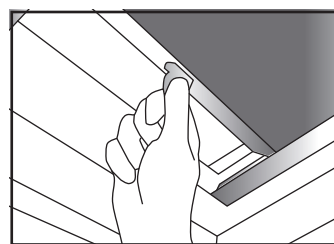
step nine

Position the fixing screws through the top of each side channel and secure. Tighten the screws at the bottom of each side channel.



step ten

Operate the blind by tilting the finger tab forward to release the blind. (Keep hold of the tab). To stop the blind tilt the tab back to it's original position.



step eleven

If you would like more information or help with fitting your blind, please call **0800 916 7798** 8.30am - 5.00pm Monday to Friday.